

Board of Directors

The board of directors provides stewardship, direction, and governance so the Foundation has adequate resources to advance its mission. All directors are volunteers, receiving no financial compensation, and the Foundation currently has no paid staff.



OUR 2019 BOARD OF DIRECTORS

- Joe Malcom, President
- Neal Peterson, Vice President
- Steven Kearsley, Treasurer
- Linda Howard, Secretary
- Steve Bell, Director
- Teresa Boss, Secretary
- Helen Bennett, Director
- Matthew Bierek, Director
- Bob Boss, Director
- Ginny De Herdt, Director
- Rod Harvey, Director
- Doug Edmonds, City Council Representative

WWW.PHILOMATHCOMMUNITYFOUNDATION.COM/MEET-OUR-BOARD (FOR MOST UP TO DATE LIST)

Thank you!

Mission

OUR MISSION

The Philomath Community Foundation is committed to serving the needs of youth and family, assisting the elderly and fostering community service, including arts and economic development. The Philomath Community Foundation fulfills its mission as a 501(c)3 foundation by:

- Encouraging private giving to charitable endowments for the public good
- Providing a flexible tax-exempt way for donors with diverse philanthropic interests to make gifts benefiting the community
- Carrying out grant and gift-making programs that are visionary, inclusive and enhance the quality of life in the Philomath community



Art for All to Enjoy A grant from the Foundation partially covered cost for Philomath Public Art Council to commission this metal sculpture by Karen Lee-Thompson and Dan McKenzie for public display.

Philomath Community Foundation

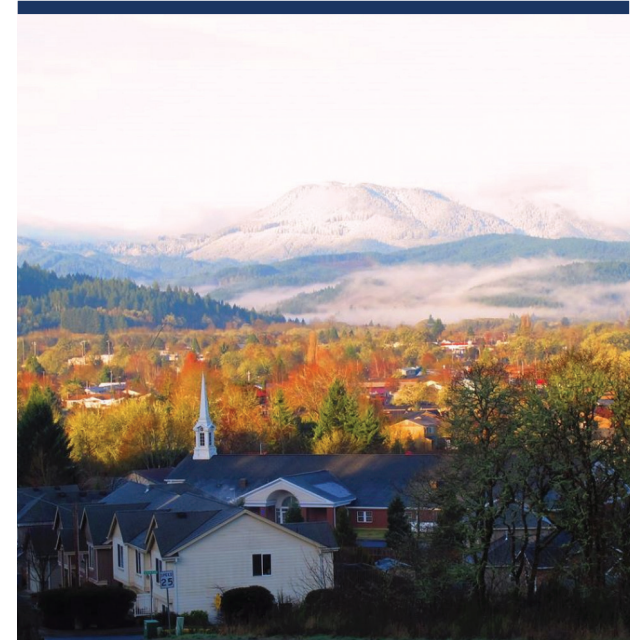
P.O. Box 1000
Philomath, Oregon 97370
philomathcf@yahoo.com

philomathcommunityfoundation.com



**PHILOMATH
COMMUNITY
FOUNDATION**

Investing in our
community



PHILOMATH

A great place to learn.

A great place to live.

A great place to leave your mark.

Promoting Local Philanthropy

WHO WE ARE

Philomath Community Foundation was established in 1998 to foster charitable giving *to benefit the Philomath community.*

We are a 501(c)(3) tax-exempt charitable organization.

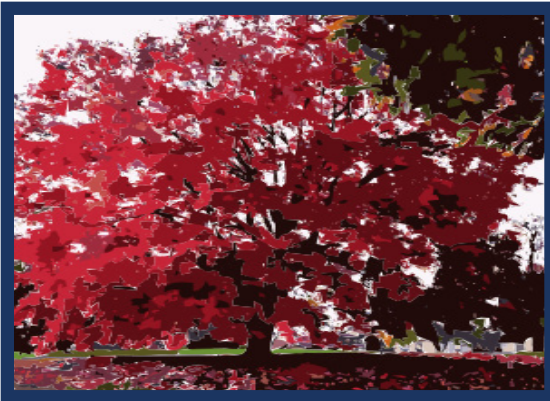
WHAT WE DO

We make grants to support community projects and activities.

We award scholarships to local high school graduating seniors.

We partner with local, charitable projects and organizations to help them. Their missions must align with the ours and help the Foundation move forward with our mission.

We promote locally focused philanthropy--helping individuals and organizations establish scholarships and endowments.



IMPACT ON COMMUNITY

The Foundation strengthens and enhances the quality of life in the greater Philomath area for everyone by harnessing the power of community--caring and sharing.

Investing in the Community and Future

GRANTS

Nonprofits whose mission and work benefits residents in the greater Philomath area are eligible to apply.

Some Past Grant Recipients

- Benton Furniture Share
- Benton Historical Museum
- Benton Juvenile Department
- Philomath Community Services
- Philomath High School:
- Senior All Night Party
- Music Department
- Philomath Youth Activities Club

SCHOLARSHIPS

The Foundation administers a number of scholarship funds. Awards are made to high school seniors graduating from Philomath High School. View a complete list at our web site.

To learn how to establish a scholarship fund, please contact us.

HOW TO APPLY

Learn how to apply for grants or scholarships, and download scholarship application forms. Visit our web site philomathcommunityfoundation.com.



Partnering with Others in Philanthropy

FISCAL SPONSORSHIPS

The Foundation can serve as a fiscal sponsor for a project or organization. It may or may not have its own 501(c)3. It must serve a worthy, charitable purpose that fits with our mission.

Sponsored Projects and Organizations

- Lilly's Lope for Hope
- Philomath Performing Arts Benefit Fund
- Castle Family Forest
- We Care

Fiscal sponsorships require carefully structured agreements and board approval.

ENDOWED FUNDS (Endowments)

Major gifts enable establishing endowments, which fall into two broad categories. They may be created and named to honor or remember someone.

Charitable Funds

- Proceeds provide grants to support charitable purposes that benefit the community.

Scholarship Funds

- Proceeds are used for educational scholarships.

HOW TO ESTABLISH A FUND

Learn how to establish an endowed fund. Contact us.